

wineo

**PURLINE**  
**BIOBODEN** | ORGANIC FLOORING  
SUELO BIO | SOL ORGANIQUE  
ORGANIC FLOORING | **BIOBODEN**  
SOL ORGANIQUE | SUELO BIO



**wineo 1500**

## wineo 1500

**BESTE ZUTATEN FÜR  
JEDE HERAUSFORDERUNG**

BEST INGREDIENTS FOR  
EVERY CHALLENGE

LES COMPOSANTS EXCEPTIONNELS POUR  
RÉPONDRE À N'IMPORTE QUEL DÉFI

LOS MEJORES COMPONENTES PARA  
CUALQUIER DESAFÍO



White Marble | wineo 1500 stone XL | PL090C  
Supreme Oak Grey | wineo 1500 wood L | PL070C

# wineo 1500



**EXTREM BELASTBAR**  
EXTREMELY DURABLE  
EXTRÊMEMENT RÉSISTANT  
RESISTENCIA AL USO EXCEPCIONAL



**HERVORRAGEND UV-BESTÄNDIG**  
OUTSTANDINGLY UV-RESISTANT  
EXCELLENTE RÉSISTANCE AUX UV  
RESISTENCIA EXCEPCIONAL A LA LUZ UV



**ABSOLUT GERUCHSNEUTRAL**  
ABSOLUTELY ODOUR NEUTRAL  
L'ODEUR DU NATUREL  
CARENCIA ABSOLUTA DE OLOR



**BESONDERS TEMPERATURSICHER**  
PARTICULARLY TEMPERATURE STABLE  
PARTICULIÈREMENT STABLE AUX  
VARIATIONS DE TEMPÉRATURE  
ESTABILIDAD TÉRMICA EXCEPCIONAL



**ÄUSSERST WIRTSCHAFTLICH**  
EXCEPTIONALLY ECONOMICAL  
EXTRÊMEMENT ÉCONOMIQUE  
MÁXIMA EFICACIA ECONÓMICA



**INNENRAUM-LUFTQUALITÄT**  
INDOOR AIR QUALITY  
QUALITÉ DE L'AIR INTÉRIEUR  
CALIDAD DEL AIRE INTERIOR



**RAUCHARM**  
MINIMAL SMOKE  
FAIBLE DÉGAGEMENT DE FUMÉE  
SIN EMISIÓN DE HUMO



**PFLEGELEICHT**  
EASY CARE  
FACILE À ENTRETENIR  
FÁCIL DE LIMPIAR



**FEUCHTRAUMGEEIGNET**  
HIGH HUMIDITY AREAS  
CONVIENT AUX PIÈCES HUMIDES  
APTO PARA ESPACIOS HÚMEDOS



**GERÄUSCHARM**  
QUIET  
SILENCIEUX  
POCO RUIDOSO



**GELENKSCHONEND**  
GENTLE ON THE ANKLES  
PRÉSERVE LES ARTICULATIONS  
PROTEGE LAS ARTICULACIONES



**FUSSWARM**  
WARM TO THE FEET  
CONTACT AGRÉABLE AUX PIEDS  
CALIENTE EN LOS PIES



**RUTSCHFEST**  
SLIP-RESISTANT  
ANTIDÉRAPANT  
ANTIDESLIZANTE



**FÜR FUSSBODENHEIZUNG GEEIGNET**  
SUITABLE FOR UNDERFLOOR HEATING  
CONVIENT AU CHAUFFAGE PAR LE SOL  
APTO PARA SUELOS RADIANTES



Supreme Oak Natural | wood L | PL068C

# wineo 1500

## WINEO PURLINE BIOBODEN

wineo **PURLINE** Bioboden ist ein hochwertiger Polyurethan-Bodenbelag aus besten Zutaten. Die Basis bildet ecuran, ein Hochleistungsverbundwerkstoff, der zu einem überwiegenden Teil aus Pflanzenölen wie Raps- oder Rizinusöl und natürlich vorkommenden, mineralischen Komponenten wie Kreide hergestellt wird.

wineo PURLINE Bioboden punktet vor allem durch seine Nachhaltigkeit kombiniert mit einer extremen Strapazierfähigkeit; auch ist er hinsichtlich aller Produktionsschritte „Made in Germany“.



## WINEO PURLINE SOL ORGANIQUE

Le sol biologique wineo **PURLINE** est un revêtement de sol en polyuréthane de qualité supérieure composé des meilleurs matériaux. ecuran, un composite de grande efficacité qui est principalement fabriqué à partir d'huiles végétales comme le colza ou le ricin et de composants minéraux naturels comme la craie constitue la base du revêtement.

Le sol organique wineo PURLINE se distingue principalement par sa longévité combinée à une extrême résistance. Toutes les étapes de sa production sont naturellement « Made in Germany ».

## WINEO PURLINE ORGANIC FLOORING

wineo **PURLINE** organic flooring is a high-quality polyurethane flooring solution made from the finest materials. The basis is provided by ecuran, a high-performance composite material that is manufactured primarily from plant-based oils such as canola oil or castor oil and naturally-occurring mineral components such as chalk.

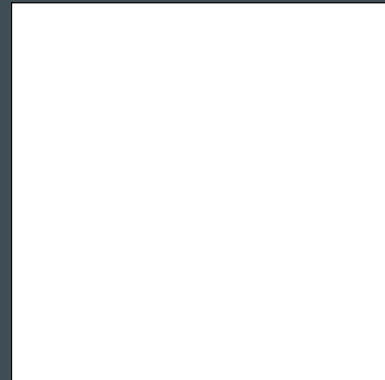
wineo PURLINE organic flooring impresses most of all with its sustainability combined with extreme resilience; furthermore, it is truly made in Germany throughout all of its production stages.

## WINEO PURLINE SUELO BÍO

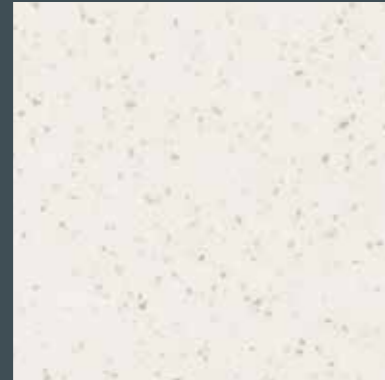
El suelo wineo bío **PURLINE** es un revestimiento de alta calidad a base de poliuretano fabricado con los mejores materiales. La base la constituye ecuran, un material compuesto de alto rendimiento fabricado en su mayor parte con aceites vegetales como los de colza o ricino y componentes minerales presentes en la naturaleza como la tiza.

El suelo bío wineo PURLINE destaca sobre todo por su sostenibilidad medioambiental combinada con una resistencia extrema. Además, es un producto „Made in Germany“ en todas sus fases de producción.

# wineo 1500 chip ∞



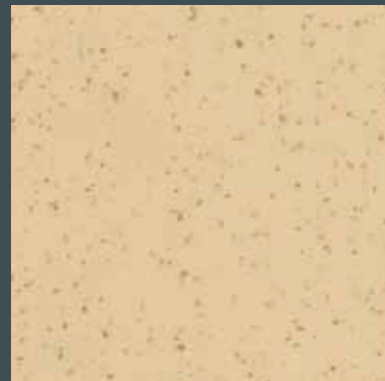
Pure White | PLR025C | 20 x 2 m



Pure White Stars | PLR123C | 20 x 2 m



Sinai Sand | PLR002C | 20 x 2 m



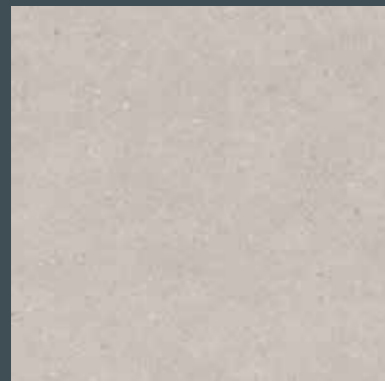
Sinai Sand Stars | PLR130C | 20 x 2 m



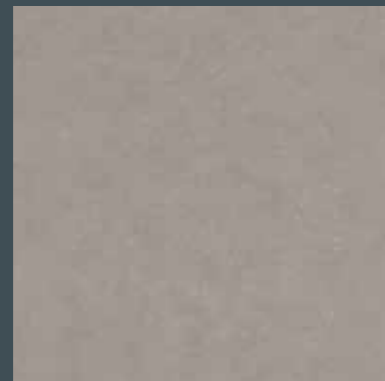
Melange | PLR003C | 20 x 2 m



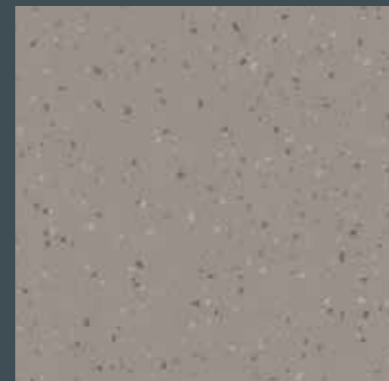
Cappuccino | PLR004C | 20 x 2 m



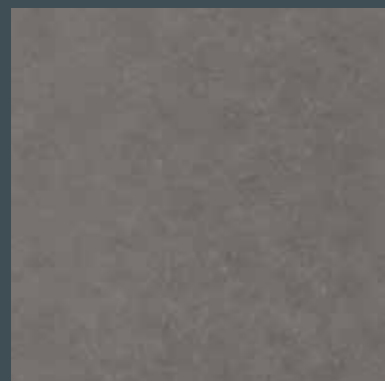
Light Grey | PLR021C | 20 x 2 m



Silver Grey | PLR022C | 20 x 2 m



Silver Grey Stars | PLR124C | 20 x 2 m



Steel Grey | PLR023C | 20 x 2 m

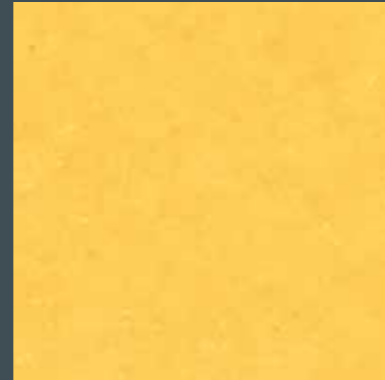


Midnight Grey | PLR024C | 20 x 2 m



Midnight Grey Stars | PLR126C | 20 x 2 m

# wineo 1500 chip ∞



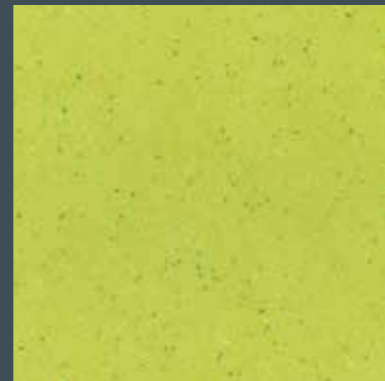
Honey Mustard | PLR128C | 20 x 2 m



Terracotta Dark | PLR009C | 20 x 2 m



Red Rubin | PLR011C | 20 x 2 m



Apple Green | PLR185C | 20 x 2 m



Racing Green | PLR019C | 20 x 2 m



Jungle Green | PLR018C | 20 x 2 m



Purple Rain | PLR013C | 20 x 2 m



Summer Sky | PLR014C | 20 x 2 m



Navi Blue | PLR129C | 20 x 2 m



Navi Blue Stars | PLR131C | 20 x 2 m

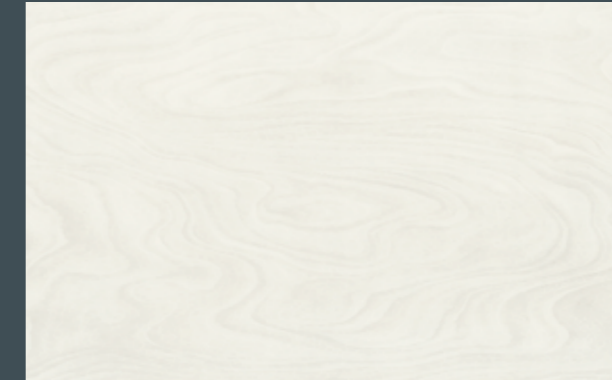


Denim Blue Stars | PLR132C | 20 x 2 m



Pure Black Stars | PLR127C | 20 x 2 m

# wineo 1500 wood ∞



Floating Wood Snow | PLR133C | 20 x 2 m



Halifax Oak | PLR036C | 20 x 2 m



Floating Wood Sand | PLR134C | 20 x 2 m



Pacific Oak | PLR037C | 20 x 2 m



Napa Walnut Cream | PLR135C | 20 x 2 m



Cottage Oak | PLR038C | 20 x 2 m



Napa Walnut Brown | PLR136C | 20 x 2 m



Missouri Oak | PLR039C | 20 x 2 m

# wineo 1500 fusion combinations



flowers

ornaments

cool

pure

warm

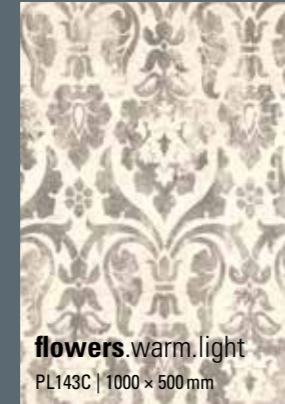
bright



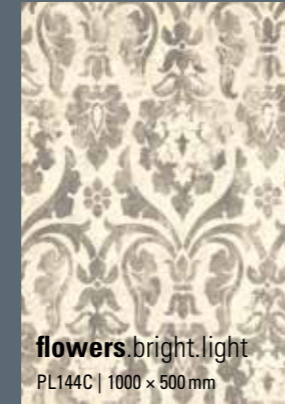
**flowers.cool.light**  
PL137C | 1000 x 500 mm



**flowers.pure.light**  
PL142C | 1000 x 500 mm



**flowers.warm.light**  
PL143C | 1000 x 500 mm



**flowers.bright.light**  
PL144C | 1000 x 500 mm



**flowers.cool.dark**  
PL138C | 1000 x 500 mm



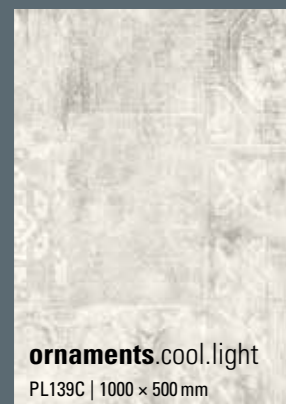
**flowers.pure.dark**  
PL146C | 1000 x 500 mm



**flowers.warm.dark**  
PL147C | 1000 x 500 mm



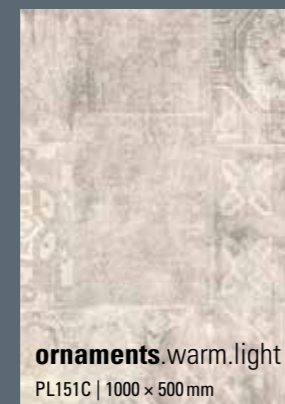
**flowers.bright.dark**  
PL148C | 1000 x 500 mm



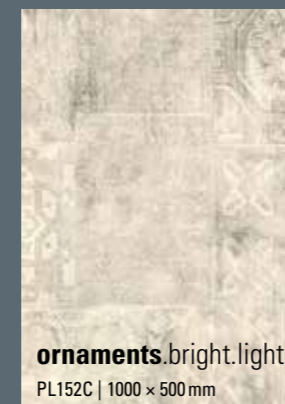
**ornaments.cool.light**  
PL139C | 1000 x 500 mm



**ornaments.pure.light**  
PL150C | 1000 x 500 mm



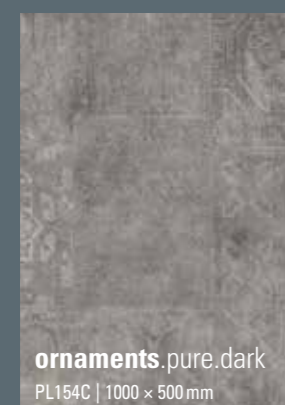
**ornaments.warm.light**  
PL151C | 1000 x 500 mm



**ornaments.bright.light**  
PL152C | 1000 x 500 mm



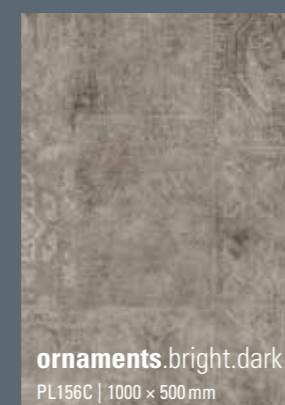
**ornaments.cool.dark**  
PL140C | 1000 x 500 mm



**ornaments.pure.dark**  
PL154C | 1000 x 500 mm



**ornaments.warm.dark**  
PL155C | 1000 x 500 mm



**ornaments.bright.dark**  
PL156C | 1000 x 500 mm

# wineo 1500 fusion



cool

pure

warm

bright



**cool.one**  
PLR107C | 20 x 2 m  
PL107C | 1000 x 500 mm



**pure.one**  
PLR111C | 20 x 2 m  
PL111C | 1000 x 500 mm

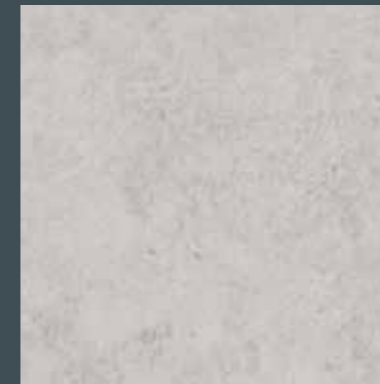


**warm.one**  
PLR119C | 20 x 2 m  
PL119C | 1000 x 500 mm



**bright.one**  
PLR115C | 20 x 2 m  
PL115C | 1000 x 500 mm

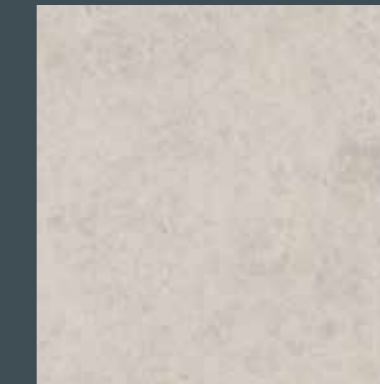
one



**cool.two**  
PLR108C | 20 x 2 m  
PL108C | 1000 x 500 mm



**pure.two**  
PLR112C | 20 x 2 m  
PL112C | 1000 x 500 mm

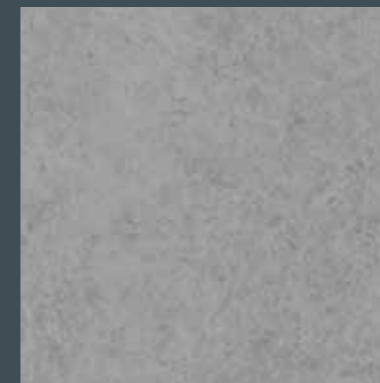


**warm.two**  
PLR120C | 20 x 2 m  
PL120C | 1000 x 500 mm

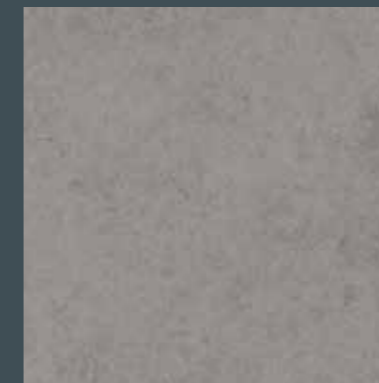


**bright.two**  
PLR116C | 20 x 2 m  
PL116C | 1000 x 500 mm

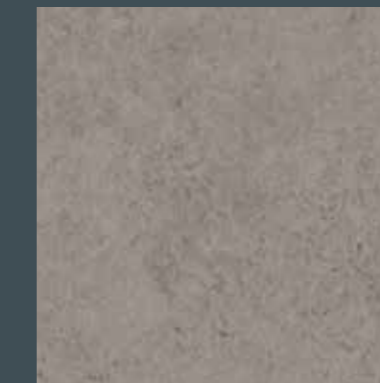
two



**cool.three**  
PLR109C | 20 x 2 m  
PL109C | 1000 x 500 mm



**pure.three**  
PLR113C | 20 x 2 m  
PL113C | 1000 x 500 mm

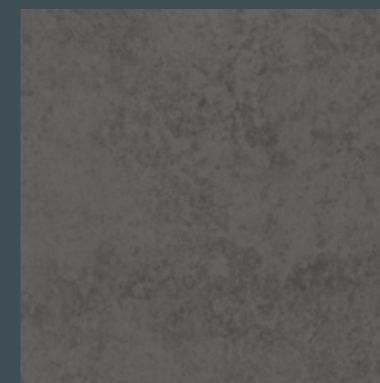


**warm.three**  
PLR121C | 20 x 2 m  
PL121C | 1000 x 500 mm

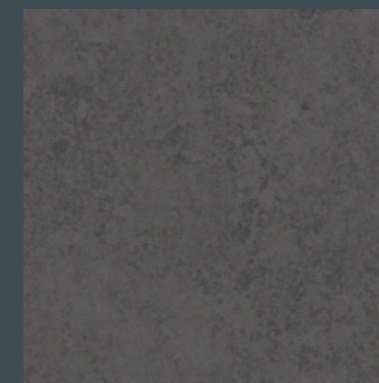


**bright.three**  
PLR117C | 20 x 2 m  
PL117C | 1000 x 500 mm

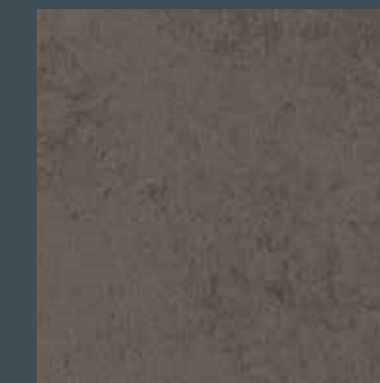
three



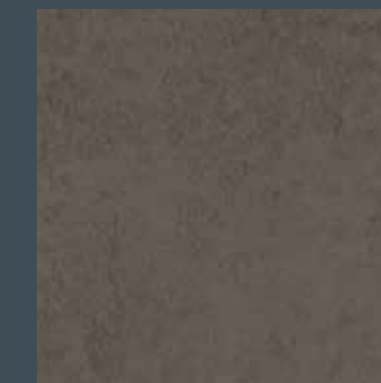
**cool.four**  
PLR110C | 20 x 2 m  
PL110C | 1000 x 500 mm



**pure.four**  
PLR114C | 20 x 2 m  
PL114C | 1000 x 500 mm



**warm.four**  
PLR122C | 20 x 2 m  
PL122C | 1000 x 500 mm



**bright.four**  
PLR118C | 20 x 2 m  
PL118C | 1000 x 500 mm

four

# wineo 1500 wood XL



Fashion Oak Natural | PL091C | 1500 x 250 mm



Fashion Oak Cream | PL092C | 1500 x 250 mm



Fashion Oak Grey | PL093C | 1500 x 250 mm



Crystal Pine | PL098C | 1500 x 250 mm



Native Ash | PL099C | 1500 x 250 mm



Crafted Oak | PL080C | 1500 x 250 mm

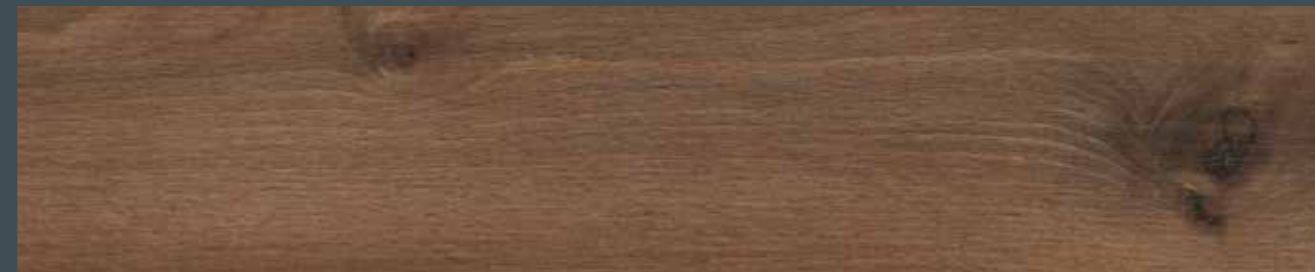
# wineo 1500 wood XL



Village Oak Cream | PL087C | 1500 x 250 mm



Village Oak Grey | PL089C | 1500 x 250 mm



Village Oak Brown | PL088C | 1500 x 250 mm



V4

**WOOD XL-DESIGNS MIT UMLAUFENDER V4 FUGE.**

WOOD XL-DESIGNS WITH ALL-ROUND V4 JOINT.  
WOOD XL-DESIGNS AVEC 4 CHANFREINS.  
WOOD XL-DISEÑOS CON BISEL 4 LADOS.



Queen's Oak Amber | PL096C | 1500 x 250 mm



Queen's Oak Pearl | PL097C | 1500 x 250 mm

# wineo 1500 wood XL



Western Oak Cream | PL094C | 1500 x 250 mm



Western Oak Desert | PL095C | 1500 x 250 mm



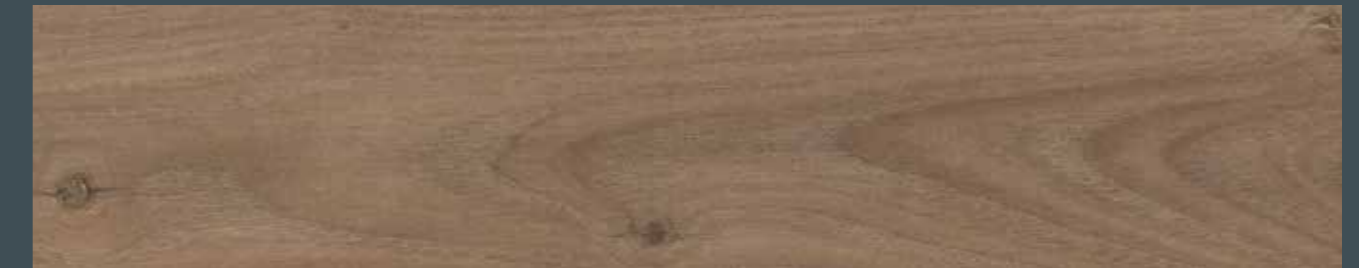
V4

**WOOD XL-DESIGNS MIT UMLAUFENDER V4 FUGE.**

WOOD XL-DESIGNS WITH ALL-ROUND V4 JOINT.  
WOOD XL-DESIGNS AVEC 4 CHANFREINS.  
WOOD XL-DISEÑOS CON BISEL 4 LADOS.



Royal Chestnut Grey | PL084C | 1500 x 250 mm

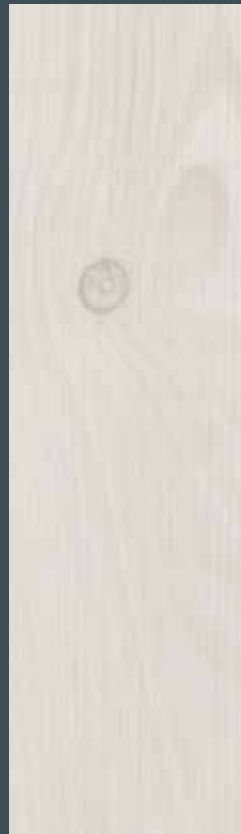


Royal Chestnut Desert | PL085C | 1500 x 250 mm



Royal Chestnut Mocca | PL086C | 1500 x 250 mm

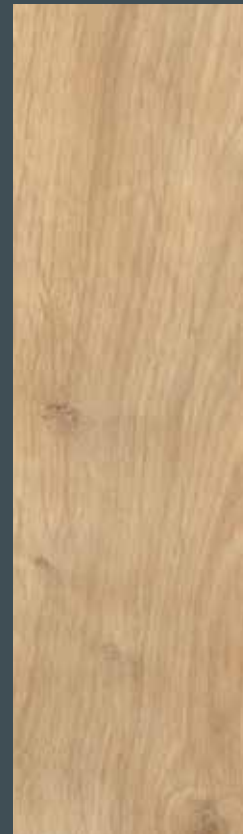
# wineo 1500 wood L



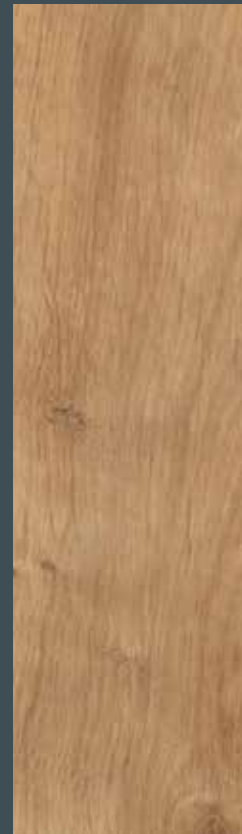
**Pure Pine**  
PL079C | 1200 × 200 mm



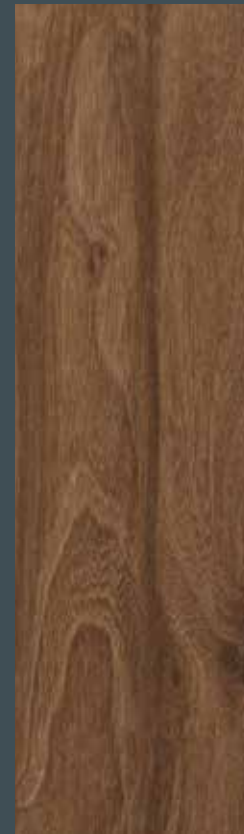
**Polar Pine**  
PL082C | 1200 × 200 mm



**Canyon Oak Sand**  
PL075C | 1200 × 200 mm

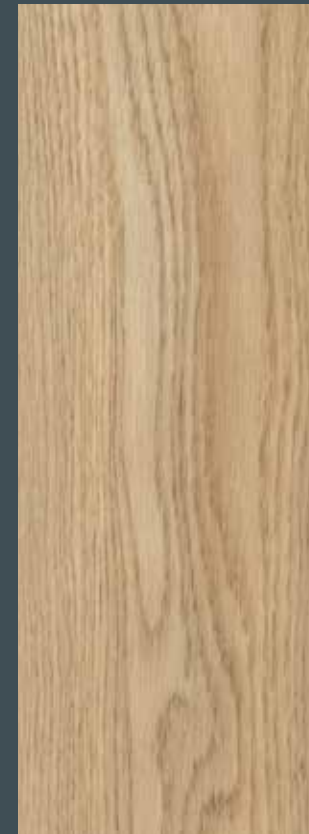


**Canyon Oak Honey**  
PL076C | 1200 × 200 mm

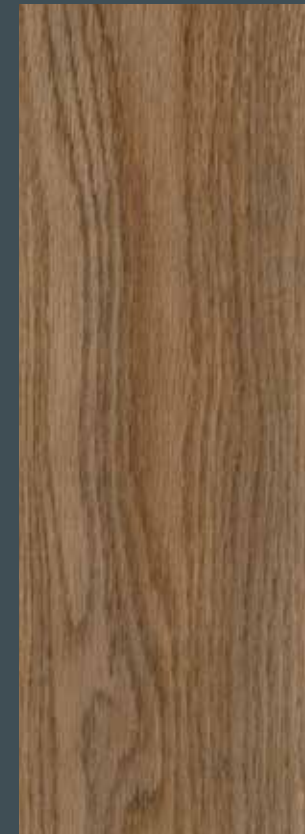


**Noble Elm**  
PL081C | 1200 × 200 mm

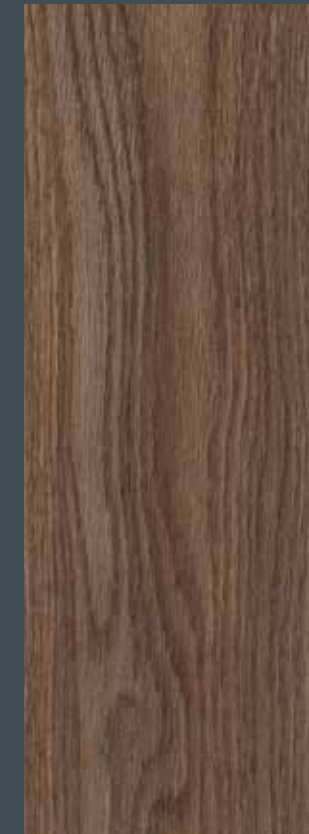
# wineo 1500 wood L



**Classic Oak Spring**  
PL071C | 1200 × 200 mm



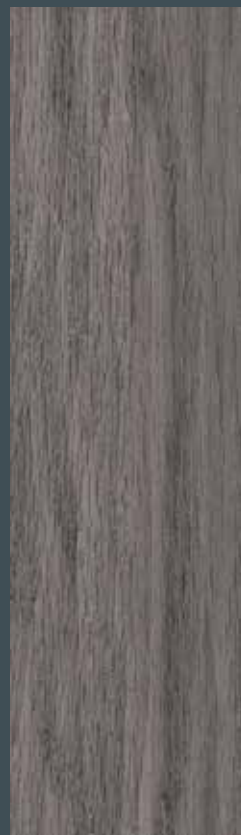
**Classic Oak Summer**  
PL072C | 1200 × 200 mm



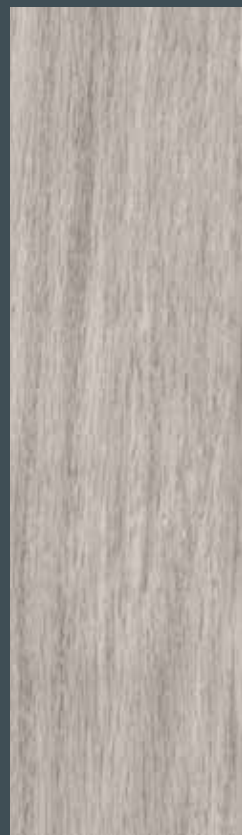
**Classic Oak Autumn**  
PL073C | 1200 × 200 mm



**Classic Oak Winter**  
PL074C | 1200 × 200 mm



**Supreme Oak Grey**  
PL070C | 1200 × 200 mm



**Supreme Oak Silver**  
PL069C | 1200 × 200 mm



**Supreme Oak Natural**  
PL068C | 1200 × 200 mm



**Wild Wood**  
PL100C | 1200 × 200 mm



**Uptown Pine**  
PL083C | 1200 × 200 mm



**Golden Pine Mixed**  
PL077C | 1200 × 200 mm



verschiedene Plankenfarben in einem Paket  
various plank colours in one box  
plusieurs couleurs dans le paquet  
diversos colores de tablas en un paquete

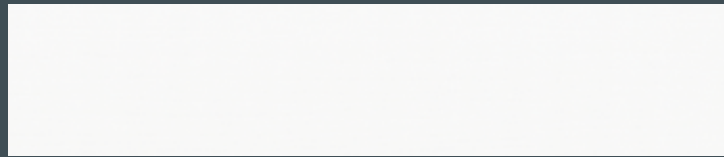


**Silver Pine Mixed**  
PL078C | 1200 × 200 mm



verschiedene Plankenfarben in einem Paket  
various plank colours in one box  
plusieurs couleurs dans le paquet  
diversos colores de tablas en un paquete

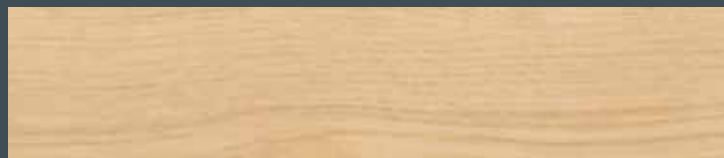
# wineo 1500 wood XS



Pure White | PL025C | 600 × 100 mm



Pure Black | PL194C | 600 × 100 mm



Garden Oak | PL005C | 600 × 100 mm



Island Oak Moon | PL045C | 600 × 100 mm



Garden Oak | wood XS | PL005C  
Island Oak Moon | wood XS | PL045C



# wineo 1500 stone XL



Carpet Concrete | PL102C | 1000 × 500 mm



Urban Copper | PL103C | 1000 × 500 mm



Just Concrete | PL101C | 1000 × 500 mm



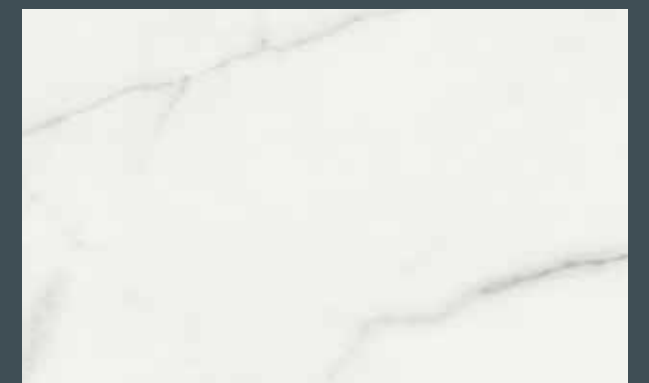
Raw Industrial | PL104C | 1000 × 500 mm



Grey Marble | PL105C | 1000 × 500 mm



Scivaro Slate | PL038C | 1000 × 500 mm



White Marble | PL090C | 1000 × 500 mm



Garden Oak | wood XS | PL005C  
Island Oak Moon | wood XS | PL045C

wineo 1500		chip ∞	wood ∞	fusion ∞	fusion XL	wood XS	wood L	wood XL	stone XL	
Verlegeart	Installation type Type de pose Forma de instalación	zum Kleben to glue à coller para encolar	zum Kleben to glue à coller para encolar	zum Kleben to glue à coller para encolar	zum Kleben to glue à coller para encolar	zum Kleben to glue à coller para encolar	zum Kleben to glue à coller para encolar	zum Kleben to glue à coller para encolar	zum Kleben to glue à coller para encolar	
Nutzungsklassen EN ISO 10874	Utilization classes Classes d'usage Clases de uso	23/34/43	23/34/43	23/34/43	23/34/43	23/34/43	23/34/43	23/34/43	23/34/43	
Format	Format Format Formato	20 × 2 m	20 × 2 m	20 × 2 m	1000 × 500 mm	600 × 100 mm	1200 × 200 mm	1500 × 250 mm	1000 × 500 mm	
Produktstärke	Product thickness Épaisseur du produit Grosor	2,5 mm	2,5 mm	2,5 mm	2,5 mm	2,5 mm	2,5 mm	2,5 mm	2,5 mm	
Inhalt/ Paket	Content / box Sommaire / paquet Contenido / paquete	1 / 40 m <sup>2</sup>	1 / 40 m <sup>2</sup>	1 / 40 m <sup>2</sup>	10 / 5 m <sup>2</sup>	28 / 1,68 m <sup>2</sup>	20 / 4,8 m <sup>2</sup>	12 / 4,5 m <sup>2</sup>	10 / 5 m <sup>2</sup>	
Pakete / Palette	Boxes / pallet Paquets / palette Paquetes / palé	6 / 240 m <sup>2</sup>	6 / 240 m <sup>2</sup>	6 / 240 m <sup>2</sup>	50 / 250 m <sup>2</sup>	144 / 241,92 m <sup>2</sup>	48 / 230,4 m <sup>2</sup>	52 / 234 m <sup>2</sup>	50 / 250 m <sup>2</sup>	
Gewicht	Weight Poids Peso	3,45 kg / m <sup>2</sup>	3,45 kg / m <sup>2</sup>	3,45 kg / m <sup>2</sup>	3,45 kg / m <sup>2</sup>	3,6 kg / m <sup>2</sup>	3,45 kg / m <sup>2</sup>	3,45 kg / m <sup>2</sup>	3,45 kg / m <sup>2</sup>	
Flächenempfindlichkeit / Chemikalienbeständigkeit EN ISO 26987	Staining / chemical resistance Sensibilité aux taches / résistance aux produits chimique Sensibilidad a las manchas / resistencia a las sustancias químicas	sehr gute Beständigkeit in Abhängigkeit von Konzentration und Einwirkzeit very good resistance with regards to concentration and exposure time					très bonne résistance dépendant de la concentration et du temps d'action muy buena resistencia dependiendo de la concentración y el tiempo de efecto			
Brandverhalten EN 13501-1	Reaction to fire Tenue au feu Comportamiento en caso de incendio	C <sub>fl</sub> - s1	C <sub>fl</sub> - s1	C <sub>fl</sub> - s1	C <sub>fl</sub> - s1	C <sub>fl</sub> - s1	C <sub>fl</sub> - s1	C <sub>fl</sub> - s1	C <sub>fl</sub> - s1	
Rutschhemmstufe DIN 51130	Anti slip category Catégorie anti-glisse Nivel antideslizante	R9	R9	R9	R9	R9	R9	R9	R9	
Lichtechtheit EN ISO 105-B02	Light fastness Résistance à la lumière Resistencia a la luz	~ 7	~ 7	~ 7	~ 7	~ 7	~ 7	~ 7	~ 7	
Resteindruck EN ISO 24343-1	Residual indentation Poinçonnement rémanent Huella residual	≤ 0,10 mm	≤ 0,10 mm	≤ 0,10 mm	≤ 0,10 mm	≤ 0,10 mm	≤ 0,10 mm	≤ 0,10 mm	≤ 0,10 mm	
Dimensionsstabilität EN 434 / EN ISO 23999	Dimensional stability Stabilité dimensionnelle Estabilidad de dimensional	≤ 0,15 %	≤ 0,15 %	≤ 0,15 %	≤ 0,15 %	≤ 0,15 %	≤ 0,15 %	≤ 0,15 %	≤ 0,15 %	
Biegeverhalten   EN ISO 24344	Flexural behaviour Comportement en flexion Respuesta a la flexión	≥ 20 mm	≥ 20 mm	≥ 20 mm	≥ 20 mm	≥ 20 mm	≥ 20 mm	≥ 20 mm	≥ 20 mm	
Fußbodenheizung	Underfloor heating Chauffage par le sol Suelos radiantes	Geeignet für alle herkömmlichen Warmwasser-Fußbodenheizungen und geregelten elektrischen Systeme bis zu einer Oberflächentemperatur von 27° C. Suitable for all conventional hot water underfloor heating and electrical systems regulated up to a surface temperature of 27° C. Adapté à tous les types de système courant de chauffage à circulation d'eau et électrique régulés de façon à ce que la température à la surface de la chape n'excède pas 27° C. Apto para todas las calefacciones de suelo con agua caliente convencionales y sistemas eléctricos regulados hasta una temperatura de superficie de 27° C.								
Wärmedurchlasswiderstand EN 12667	Thermal resistance Résistance thermique Resistencia de penetración térmica	~ 0,01 (m <sup>2</sup> K)/W	~ 0,01 (m <sup>2</sup> K)/W	~ 0,01 (m <sup>2</sup> K)/W	~ 0,01 (m <sup>2</sup> K)/W	~ 0,01 (m <sup>2</sup> K)/W	~ 0,01 (m <sup>2</sup> K)/W	~ 0,01 (m <sup>2</sup> K)/W	~ 0,01 (m <sup>2</sup> K)/W	
Stuhlrollenversuch EN 425 / ISO 4918	Castor chair test Test de la chaise à roulettes Prueba de la rueda de silla	Typ W   Type W			Type W   Tipo W					
Trittschallminderung EN ISO 10140	Impact sound reduction Réduction des bruits de pas Reducción acústica de las pisadas	~ 4 dB	~ 4 dB	~ 4 dB	~ 4 dB	~ 4 dB	~ 4 dB	~ 4 dB	~ 4 dB	
Möbelfußtest   EN 424	Effect of a furniture leg Poinçonnement statique rémanent Prueba de la pata de mueble	keine Beschädigungen   without damages				sans dommage   ningún daño				
Verschleißverhalten EN 660-2	Wear resistance Résistance à l'usure Capa de desgaste	Gruppe T   Group T			Groupe T   Grupo T					
Antistatische Eigenschaften EN 1815	Anti-static properties Propriétés antistatiques Propiedades antiestáticas	≤ 2 kV	≤ 2 kV	≤ 2 kV	≤ 2 kV	≤ 2 kV	≤ 2 kV	≤ 2 kV	≤ 2 kV	
Garantie	Guarantee Garanti Garanzia	www.wineo.de/service/garantien								



www.blauer-engel.de/uz120



Declare.



BREEAM®

DGNB



CERTIFIED BY FSC Global Services

